



References - Filter



[STØVRENSING](#) [PULVERHÅNDTERING](#) [TØR KING](#) [FILT OG VIRER](#) [VANNBEHANDLING](#) [PUMPER](#) [LUFTAVFUKTNING](#)



Filter references

Industries

- Bio energy
- Building materials / Combustion
- Foundry
- Lime, rock and mining
- Smelting plant
- Waste management
- Wood working industry
- Chemical industry



- Production of: Hot water (5 MW)
- Process: Wood chips

- Filter type: Jesma Co-jet EFF-480
- Gas flow: 21.000 m³/h
- Gas temperature: 130-180°C



Bio energy

Envipower Säffle 2011



- Production: Hot water
- Process: Wood chips

- Filter type: 2 x AGPulse 64 S
- Gas flow: 2 x 9.500 m³/h
- Gas temperature: 150°C



- Production of: Leca
- Fuel: Oil, pet coke

- Filter type: AGLP 360
- Gas flow: 120.000 m³/h
- Gas temperature: 200°C



Building materials / Combustion

Maxit Ølst: 2005



- Production of: Leca
- Fuel: Oil, coal, bone meal

- Filter type: 2xAGLP 396
- Gas flow: 2x125.000 m³/h
- Gas temperature: 140°C



- Production of: Leca
- Fuel: Oil, coal, etc.
- Filter type: 2xAGLP 396
Two filters in series, each
- Gas flow: 140.000 m³/h
- Gas temperature: 210°C



- Production of: Rockwool
- Fuel: Pet coke

- Filter type: AGZ 300
- Gas flow: 45.000 m³/h
- Gas temperature: 20°C



Foundry / Brass, Zinc

Raufoss Metall: 2005



- Production of:
- Process:
- Filter type:
- Gas flow:
- Gas temperature:

Brass, Zinc
Furnace / Casting

Scheuch Impulse
40.000 m³/h
35°C





Foundry / Bronze

Becotec, Romania: 2006



- Production of: Bronze alloys
- Process: Furnace suction

- Filter type: 2xAGPulse 100 C
- Gas flow: 50.000 m³/h
- Gas temperature: 25 °C



Foundry / Bronze

Becotec Kina: 2009



- Production of: Bronze foundry
- Process: Furnace/casting

- Filter type: 3xAGPulse 144 S
- Gas flow: 80.000 m³/h
- Gas temperature: 20°C



Foundry / Bronze

Becotec Romania: 2009



- Production of: Bronze foundry
- Process: Furnace/casting
- Filter type: 2x3AGPulse 144 S
- Gas flow: 160.000 m³/h
- Gas temperature: 30°C



Foundry / Pouring fume FeMn

Eramet Norway AS: 2001



- Production of: Fe Mn foundry
- Process: Pouring fume
- Filter type: Scanpulse 252 S
- Gas flow: 100.000 m³/h
- Gas temperature: 80°C



Foundry / Pouring fume FeMn

Eramet Norway AS: 2003



- Production of: FeMn foundry
- Process: Tapping fume
- Filter type: Scanpulse 252 S
- Gas flow: 100.000 m³/h
- Gas temperature: 80°C



Foundry / Pouring fume FeMn

Eramet Norway AS: 2010



- Production of: FeMn foundry
- Process: Tapping fume

- Filter type: Scanpulse 252 S
- Gas flow: 100.000 m³/h
- Gas temperature: 80°C



Foundry / Iron

Oshaug Metallstøperi: 2006



- Production of: Models
- Process: Fine wood dust from model milling machine
- Filter type: AGPulse 35 C
- Gas flow: 8.000 m³/h
- Gas temperature: 30°C





Foundry / Iron

Vestas Castings Kristiansand 2010



- Production: Iron
- Process: Sand foundry
- Filter type: AGPulse 64
- Gas flow: 3000 m³/h
- Gas temperature: 20°C



Foundry / Iron

Sperre støperi, Elverum: 2007



- | | |
|--------------------|-------------------------|
| Production of: | Cast-iron |
| Suction from: | Sand cooler |
| • Filter type: | AGPulse 64 S |
| • Gas flow: | 8.000 m ³ /h |
| • Gas temperature: | 40 °C |



Foundry / Iron

Sperre metallstøperi 2009

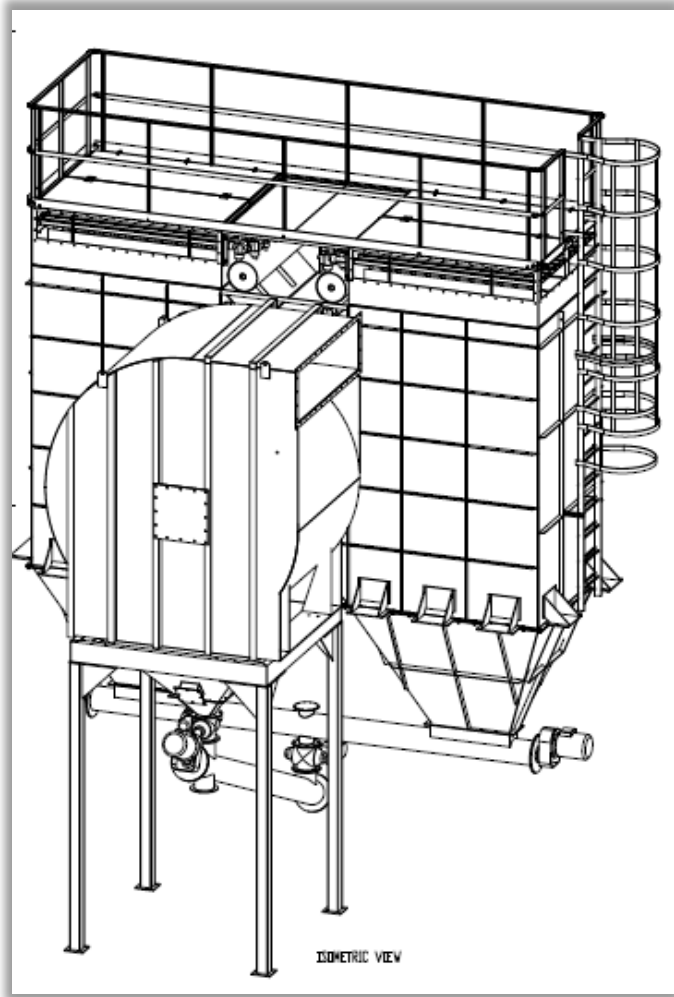


- Production: Cast iron
- Process: Sand cooler
- Filter type: AGPulse 100
- Gas flow: 20.000 m³/h
- Gas temperature: 20°C



Foundry / Iron

Sperre Baltic SIA, Riga: 2007



- Production of: Cast iron
- Process: Furnaces exhaust
- Filter type: AGPulse 288 S
- Gas flow: 35.000 m³/h
- Gas temperature: 40 °C



Foundry / Iron

Ulefoss NV AS: 2008



- Production of: Cast iron
- Process: Furnace exhaust
- Filter type: 2xAGPulse 144 S
- Gas flow: 50.000 m³/h
- Gas temperature: 30°C



Foundry / Iron

Furnes-Hamjern: 2009



- Production of: Cast iron
- Process: Furnace exhaust
- Filter type: AGPulse 100 S
- Gas flow: 23.000 m³/h
- Gas temperature: 40°C



Lime, rock and mining

Elkem Tana AS: 2010



- Production of: Quartz
- Process: Shipping and storage

- Filter type: AGPulse 144 S
- Gas flow: 36.200 m³/h
- Gas temperature: 20°C



Lime, rock and mining

SMA Mineral: 2008



- Production of: Calcium / Dolomite
- Process: Furnace exhaust
- Filter type: AGZUK 240
- Gas flow: 50.000 m³/h
- Gas temperature: 160°C



Lime, rock and mining

LKAB Narvik: 2009



- Production of: Iron ore
- Process: Shipping and storage

- Filter types: LJSK 4-13
- Gas flow: 10.000-70.000 m³/h
- Gas temperature: 20°C

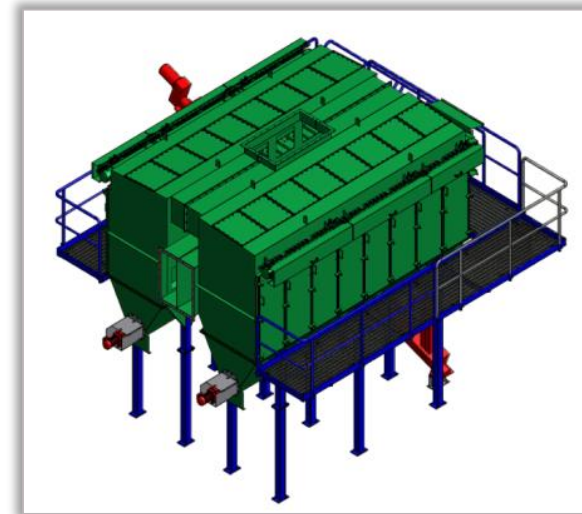


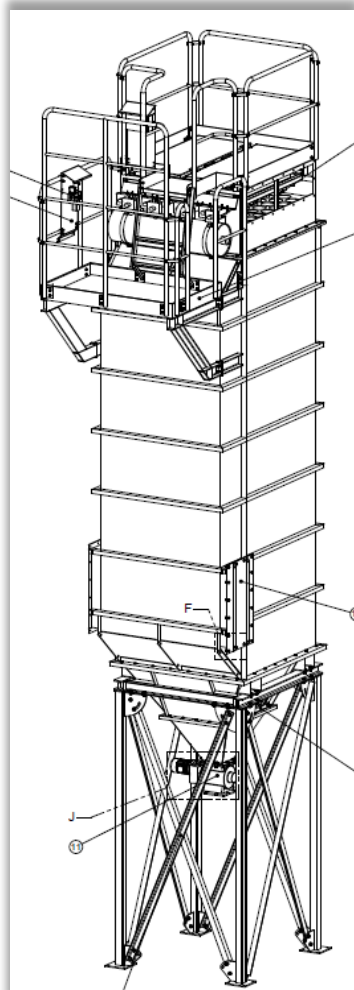
Lime, rock and mining

Skanska/LKAB Narvik 2011



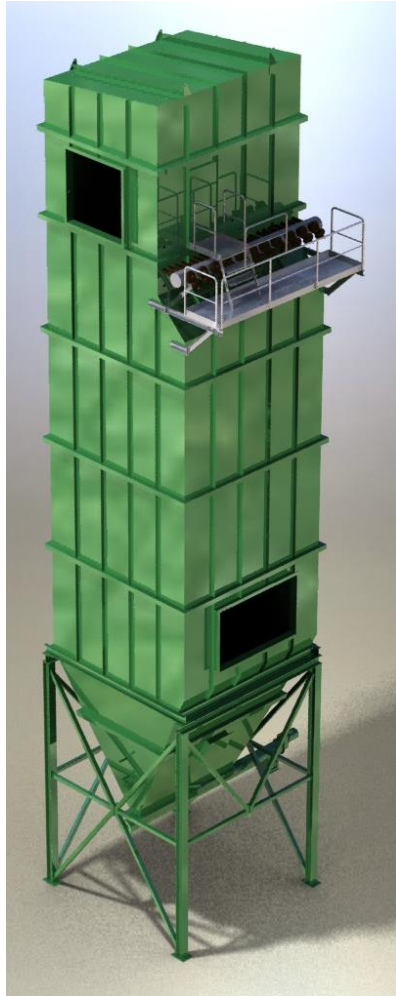
- Production of: Iron ore
- Process: Shipping and storage
- Filter type: **2 x AGLP 396 S**
AGPulse 100 S
Envicompact 08
- Gas flow: 2 x 128.000 m³/h
33.000 m³/h
46.000 m³/h
- Gas temperature: 20°C





- Production of: Iron ore
- Process: Shipping and storage

- Filter types: 5 pcs AGPulse 64 S
- Gas flow: 10.000-70.000 m³/h
- Gas temperature: 20°C



- Production of: Iron ore
- Process: Shipping and storage

- Filter types: AGLP 360
- Gas flow: 50.000 m³/h
- Gas temperature: 0-30°C



Lime, rock and mining

LKAB Svappavaara: 2012



- Production of: Iron ore
- Process: Shipping and storage

- Filter types: AGLP 360
- Gas flow: 55 000 Nm³/h
- Gas temperature: 90°C, max 150°C



Lime, rock and mining

LKAB Svappavaara: 2013



- Production of: Iron ore
- Process: Crusher/ Mine
- Filter types: AGLP 360
- Gas flow: 55 000 Nm³/h
- Gas temperature: -30°C, max 20°C





Lime, rock and mining

LKAB Kiruna/Svappavara: 2014



- Production of: Iron ore
- Process: Mobile chrusher

- Filter types: AGR
- Gas flow: 10.000 am³/h
- Gas temperature: -25°C, max 20°C





Lime, rock and mining

LKAB Narvik NK62 2018



- Production of: Iron ore
- Process: Shipping and storage
- Filter type: AGLP 396 S
- Gas flow: 132.000 m³/h
- Gas temperature: 20°C



Lime, rock and mining

Store Norske Spitsbergen: 2011



- Production of: Coal
- Process: Shipping and storage

- Filter types: AGPulse C
- Gas flow: 16.000 m³/h
- Gas temperature: 20°C / -35°C





Smelting plant / Aluminium

Alcoa Lista, filter 1-8: 05/06



- Anode gas filter for cleaning of PAH with oxide
- Hall 1 and 2: 184 furnaces
- Total gas flow: 578.000 m³/h

- Pilot plant: 11 furnaces
- Filter 1: 11 furnaces
-
- Filter 2-8: 22/24 furnaces
- Filter type: 8xAG Zuk 300
- Gas flow: 70-75.000 m³/h
- Gas temperature: 70°C





Smelting plant / Aluminium

Alcoa Lista, filter 7 and 8: 07



- Production of: Aluminium
- Process: Söderberg Furnace

- Filter type: 8xAG Zuk 300
- Gas flow: 578.000 m³/h
- Gas temperature: 70°C



Smelting plant / Aluminium

Alcoa Lista, fl.chutes filter 3,4,5,6



- Primary oxide: 200mm
- Capacity: 800kg/h
- Transport length: 30m
- Secondary oxide: 150mm
- Capacity: 400kg/h
- Transport length: 60m



Smelting plant / Aluminium Alcoa Lista, Pneumatic conv. 2007



- Manufacturer: Gericke
- Type: PHF-160
- Material: acid proof
- Number: 4 pcs
- Product: Oxide
- Wear: Very abrasive
- Bulk density: 1,0 kg/l
- Cap. pr. plant: 400 kg/h
- Transport length: 130 m
- Special pipe bend: Kalenborn



Smelting plant / Aluminium

Hycast Dubai: 2007



- Production of: Aluminium
- Process: RAM

- Filter type: AGPulse 64 C
- Gas flow: 8.200 m³/h
- Air temperature: 100 °C



Smelting plant / Aluminium

Nordural Iceland: 2008



- Production of: Aluminium
- Process: Bath Process

- Filter type: AGLP 396
- Gas flow: 160.000 m³/h
- Gas temperature: 30°C



Smelting plant / Aluminium

Hycast Qatar: 2009



- Production of: Alum. foundry
- Process: Furnace/casting

- Filter type: AGPulse 100 C
- Gas flow: 23.000 m³/h
- Gas temperature: 120°C



Smelting plant / Aluminium

Alcoa Mosjøen: 2001



- Production of: Alum. foundry
- Process: Furnace/casting
- Filter type: Scanpulse 6000
- Gas flow: 250.000 m³/h
- Gas temperature: 130°C



Smelting plant / Aluminium

Hydro-KTP: 2017



- Production of: Alum. foundry
- Process: Bath handling
- Filter type: AGPulse 64 3500
- Gas flow: 10.000 m³/h
- Gas temperature: 20°C



Smelting plant / Aluminium

Hydro-KTP: 2017



- Production of: Alum. foundry
- Process: Anode service

- Filter type: 2xAGLP 396-8
- Filter type: 2*AGPulse 144-6,5
- Gas flow: 75.000
- Gas temperature: 20°C



Smelting plant / FeSi

Elkem Bremanger: 2008



- Production of: FeSi
- Process: Packing plant

- Filter type: 2xAGPulse 144 S
- Gas flow: 2x25.000 m³/h
- Gas temperature: 20°C



Smelting plant / FeSi

Elkem Bremanger: 2010



- Production: FeSi
- Process: Packing line

- Filter type: AGPulse 64
- Gas flow: 8.000 m³/h
- Gas temperature: 20°C



Smelting plant / FeSi

Elkem Bremanger: 2011



- Production: FeSi
- Process: Crusher and screens

- Filter type: AGPulse 64
- Gas flow: 14.000 m³/h
- Gas temperature: 20°C





Smelting plant / FeSi

Elkem Iceland: 2008



- Production of: FeSi
- Process: Packing plant
- Filter type: AGPulse 64 S
- Gas flow: 8.000 m³/h
- Gas temperature: 30°C



Smelting plant / FeSi

Elkem Iceland: 2008



- Production of: FSM (FeSiMg)
- Process: Mg into furnace

- Filter type: AGLP 360
- Gas flow: 120.000 m³/h
- Gas temperature: 50°C



Smelting plant / FeSi

Elkem Iceland: 2008/2009

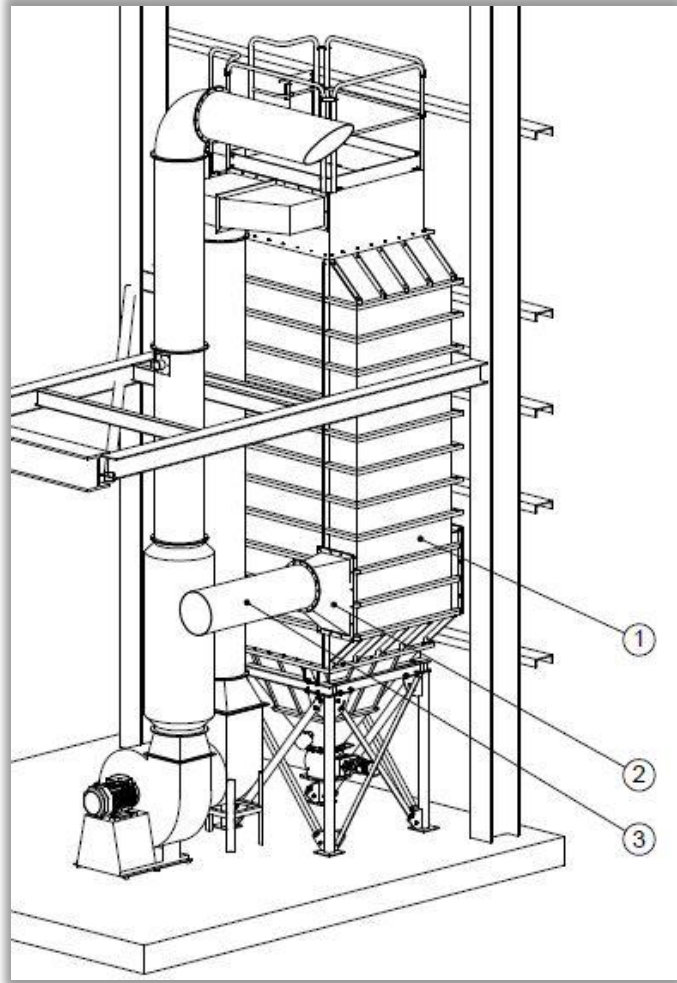


- Production of: FeSi
- Process: Crushing plant, Silo top
- Filter type: 3xAGPulse 100 S
- Gas flow: 3x18.000 m³/h
- Gas temperature: 30°C



Smelting plant / FSM

Elkem Iceland: 2010



- Production of: FSM
- Process: Crushing
- Filter type: AGPulse 64 S
- Gas flow: 12.500 m³/h
- Gas temperature: 20°C



Smelting plant / manganese

Rio Doce Manganese: 2008



- Production of: Manganese
- Process: Furnace exhaust

- Filter type: AGLP 396
- Gas flow: 110.000 m³/h
- Gas temperature: 60°C



Smelting plant / Manganese

Eramet Porsgrunn: 2009



- Production of: Manganese
- Process: Packing plant

- Filter type: AGPulse 100 C
- Gas flow: 20.000 m³/h
- Gas temperature: 20°C



Smelting plant / Silicon

Elkem Thamshavn: 2005



- Production of: Silicon
- Process: Furnace exhaust

- Filter type: 2xAGLP 396
- Gas flow: 110.000 m³/h
- Gas temperature: 165°C



Smelting plant / Silicon

Elkem Solar Pyro: 2008



- Production of: Silicon
- Process: Pyro exhaust

- Filter type: AGZUK 480
- Gas flow: 120.000 m³/h
- Gas temperature: 25°C



Smelting plant / Silicon

Elkem Solar (Agdermaskin): 2008



- Production of: Silicon
- Process: Raw material

- Filter type: AG ZUK 120
- Gas flow: 30.000 m³/h
- Gas temperature: 25°C
- Atex zone: 22/20



Smelting plant / Silicon

Elkem Solar (Agdermaskin): 2008



- Production of: Silicon
- Process: Finished material

- Filter type: AG ZUK 80
- Gas flow: 20.000 m³/h
- Gas temperature: 25°C
- Atex zone: 22/20





Smelting plant / Silicon

Elkem Solar: 2008

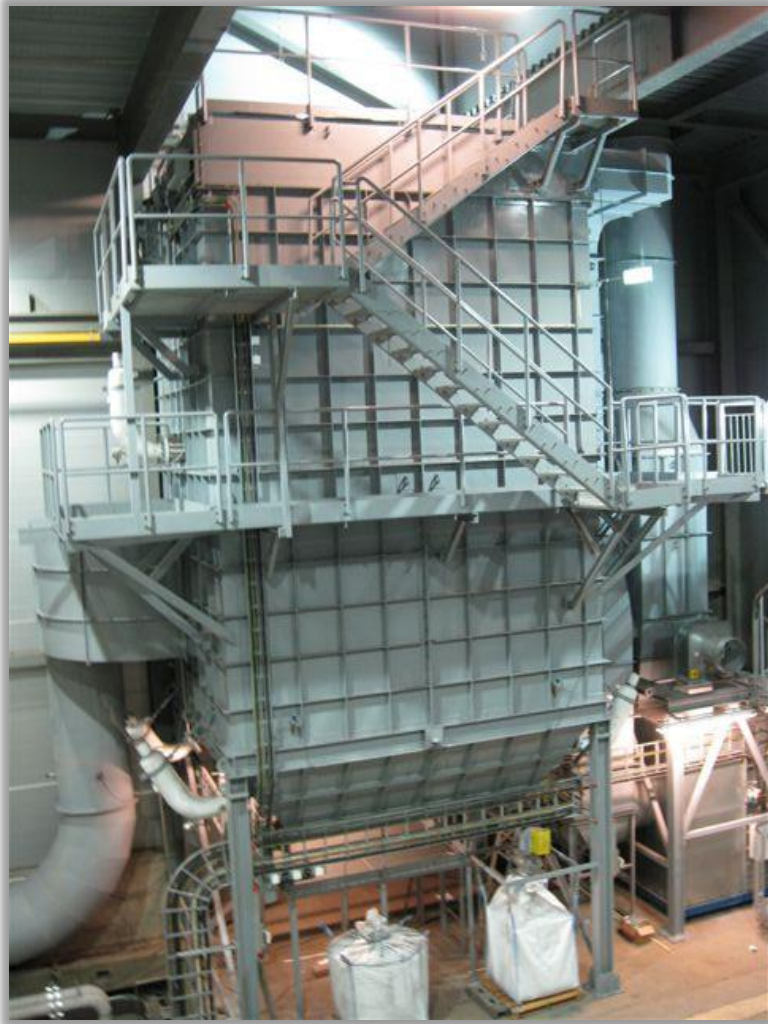


- Production of: Silicon
- Process: RMS
- Filter type: AGZuk 80
- Gas flow: 20.000 m³/h
- Gas temperature: 20°C
- Atex sone: 22/20



Smelting plant / Silicon

Elkem Solar: 2008



- Production of: Silicon
- Process: CSP1
- Filter type: AGZuk 240
- Gas flow: 57.000 m³/h
- Gas temperature: 20°C
- Atex zone: 22/20



Smelting plant / Silicon

Elkem Thamshavn: 2011



- Production of: Silicone
- Process: Furnace exhaust

- Filter type: 6xAGLP 396
- Gas flow: 227.000 m³/h
- Gas temperature: 220°C





Smelting plant / Carbon

Elkem Carbon, Fiskaa: 2018



- Production of: Petroleum coke
- Process: Calcinator exhaust

- Filter type: AGLP 360
- Gas flow: 30.650 m³/h
- Gas temperature: 250°C



Smelting plant / Silicon

Fesil Sunergy, Lilleby 2011



- Production: Silicon
- Process: Test plant off-gas furnace

- Filter type: AGPulse 2 x 144 - 6500
- Gas flow: 45 000 m³/h
- Gas temperature: 65° / 150°



Waste management

Hellik Teigen: 2009



- Production: Waste management
- Process: Screening
- Filter type: AGPulse 100 S
- Gas flow: 8.000 m³/h
- Gas temperature: 20 °C



Wood working industry / Chem pulp

Södra Cell Tofte: 2006



- Process: Chemical pulp
- Suction from: Silos and reloading

- Filter type: AGPulse 100 C
- Gas flow: 20.000 m³/h
- Gas temperature: 20 °C



Chemical industry

Yara Porsgrunn 2009



- Production: Phosphate
- Process: Fertilizer factory

- Filter type: AGPulse 100 S
- Gas flow: 10.000 m³/h
- Gas temperature: 20°C



Chemical industry

Yara Porsgrunn 2011



- Production: Phosphate
- Process: Fertilizer factory

- Filter type: 2 x AGPulse 64 S
- Gas flow: 5.000 & 10.000m³/h
- Gas temperature: 30°C

